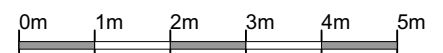
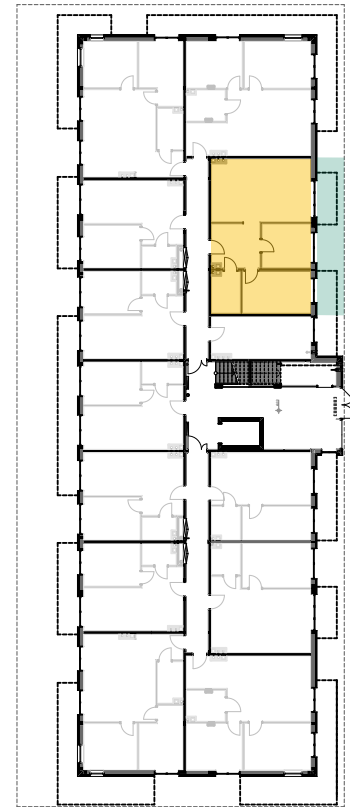
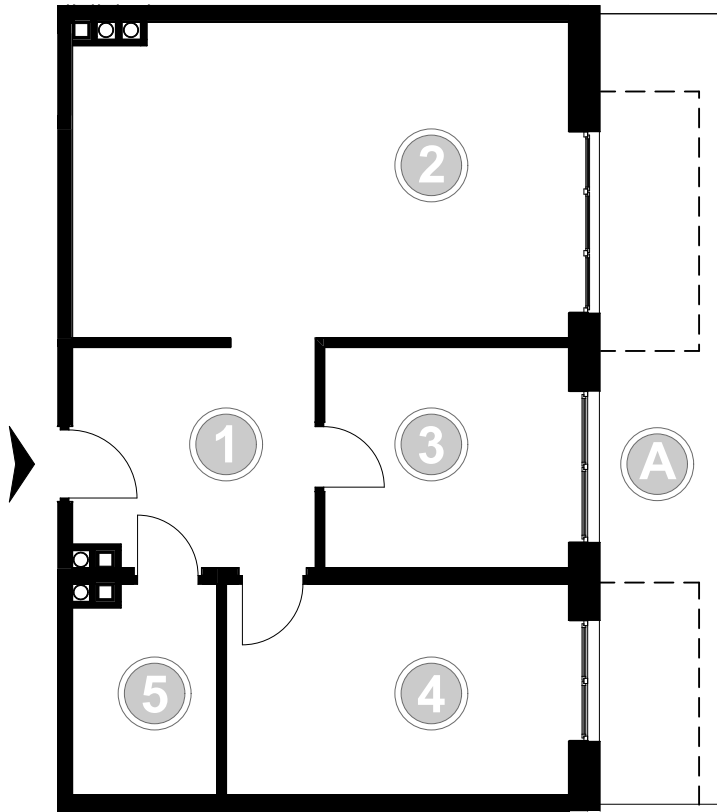




PABIANICE, UL. POPLAWSKA

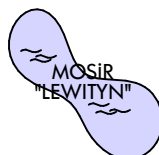
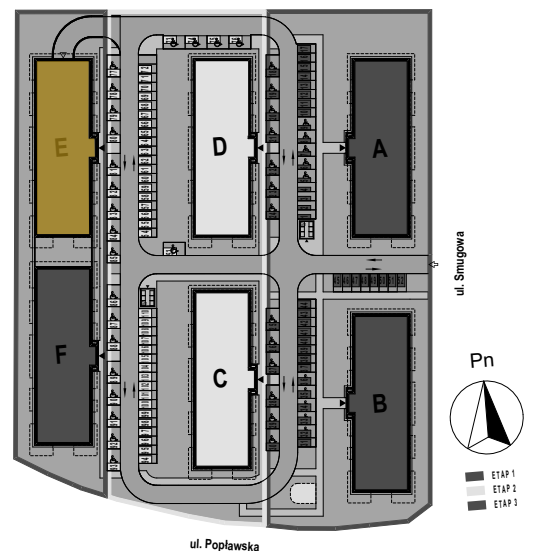
BUDYNEK **E** PIETRO **0** MIESZKANIE **12**

63,3m²



| | | |
|------------------------------|---------------|---------------------------|
| 001 | HOLL | 9,1 |
| 002 | SALON+KUCHNIA | 27,1 |
| 003 | POKÓJ | 9,4 |
| 004 | POKÓJ | 12,6 |
| 005 | ŁAZIENKA | 5,1 |
| POWIERZCHNIA UŻYTKOWA | | 63,3 m² |

| | | |
|---|---------|--------------------|
| A | OGRÓDEK | 18,9m ² |
|---|---------|--------------------|



RZECZYWISTA POWIERZCHNIA ZOSTANIE OBLICZONA NA PODSTAWIE OBIARU POWYKONAWCZEGO

M2R Sp.z o.o.
 95-200 Pabianice, ul. Piłsudskiego 7
 www.levityn.pl
 biuro@levityn.pl
 tel. 881 600 350 510 600 200

