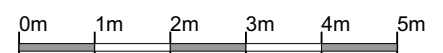
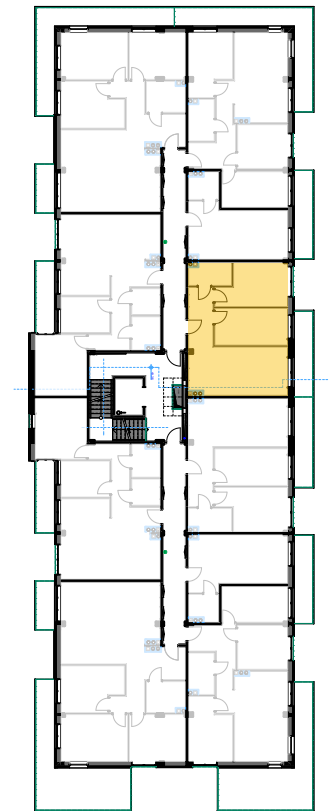
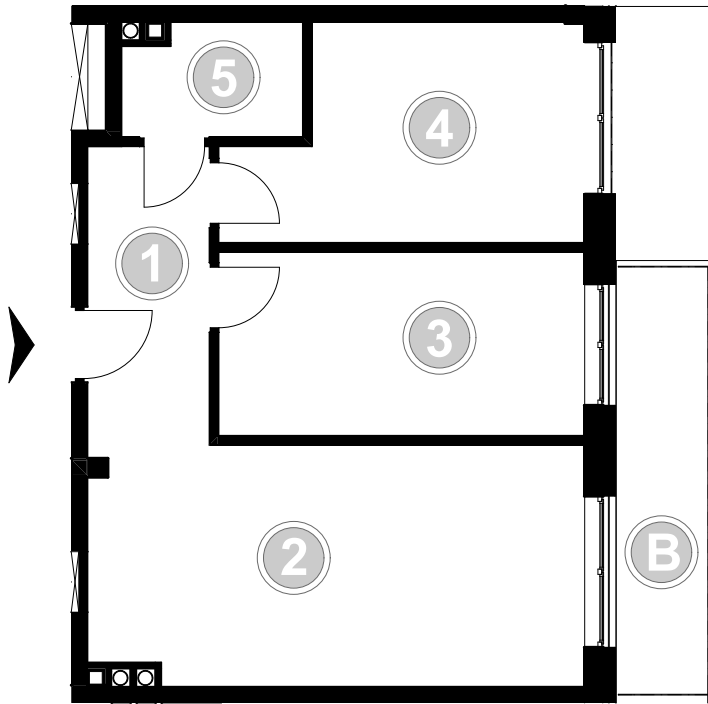




PABIANICE, UL. POPLAWSKA

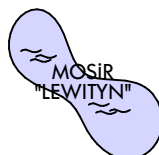
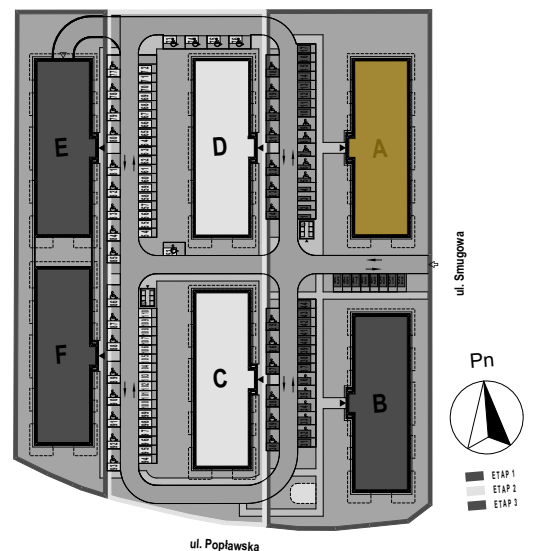
BUDYNEK **A** PIETRO **3** MIESZKANIE **40**

53,9m²



| | | |
|------------------------------|---------------|---------------------------|
| 001 | HOL | 6,3 |
| 002 | SALON+KUCHNIA | 20,5 |
| 003 | POKÓJ | 11,7 |
| 004 | POKÓJ | 12,0 |
| 005 | ŁAZIENKA | 3,4 |
| POWIERZCHNIA UŻYTKOWA | | 53,9 m² |

| | | |
|----------|---------------|-------------|
| B | BALKON | 7,10 |
|----------|---------------|-------------|



RZECZYWISTA POWIERZCHNIA ZOSTANIE OBLICZONA NA PODSTAWIE OBIARU POWYKONAWCZEGO

M2R Sp.z o.o.
 95-200 Pabianice, ul. Piłsudskiego 7
 www.levityn.pl
 biuro@levityn.pl
 tel. 881 600 350 510 600 200

